

Certification and Approval

Certification Code	EEx ed II 2 GD IIC T5 or T6
Certification number	LCIE 99 ATEX 6027X, LCIE 00 ATEX 6010X, LCIE 02 ATEX 6029X
Certification standard	EN 50014, 018, EN50281-1-1, EN 60309-1 IEC60079-0, 1, IEC 60309-1
Protection	IP66/67

Features Options

Integral switching device
 Spring assisted contacts
 IK08 Impact Resistance

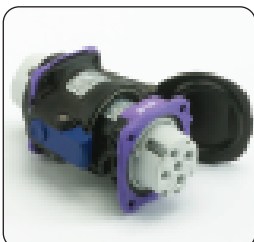
Cover opening variants
 Pilot earth
 Auxillary contacts



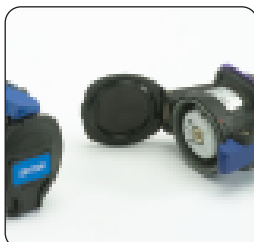
DXN plug and socket with handle



Socket assembled to wall box



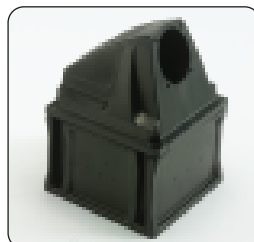
plug and socket coupled



Socket



Plug



Wall box



Handle

Technical Data

Voltage	24v, 110v, 230v, 415v
Current	20A , 32A, 63A
Pole configuration	2p-24v, 3p-110v, 3p-230v, 4p-415v, 5p-415v
Operating Temperature	-40°C to +40°C
Terminals	Variable from 2 pole on 24v units to 5 pole on 415v units Silver Nickel contacts – spring assisted. AC22-23 Rated contacts
Mounting	Use 30° or 70° wall box for socket 4 fixing holes on mounting fixtures and sockets Use handle and cable gland for plug 4 fixing holes on plug to handle units
Material	Glass reinforced polyester casings
Finish	Black only for hazardous area
Features	Integral switching device Spring assisted terminals IK08 Impact Resistance MOD approved with pilot earth
Options	Self returning lid 180° opening Lid 180° opening and self returning lid Pilot Earth Auxillary contacts