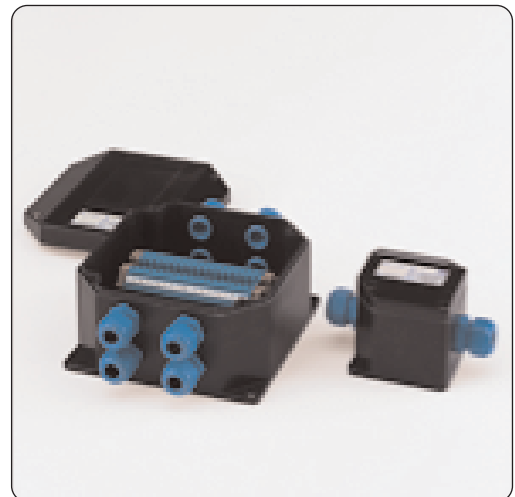


### Certification and Approval

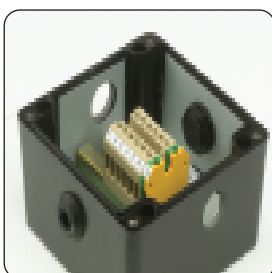
Certification Code	EEx e dm ia II 2 GD IIC T6
Certification number	PTB 00 ATEX 1002
Certification standard	EN60079-0, 1, 7, 11, 18, EN50281-1-1-1999+A1
Protection	IP66

### Features

- Heavy duty GRP moulding
- Silicone weather seal
- Graphite loaded material to minimise static build up.



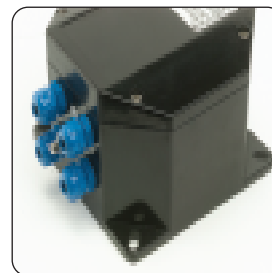
G48 and G49 Oktabox



Typical terminal arrangement



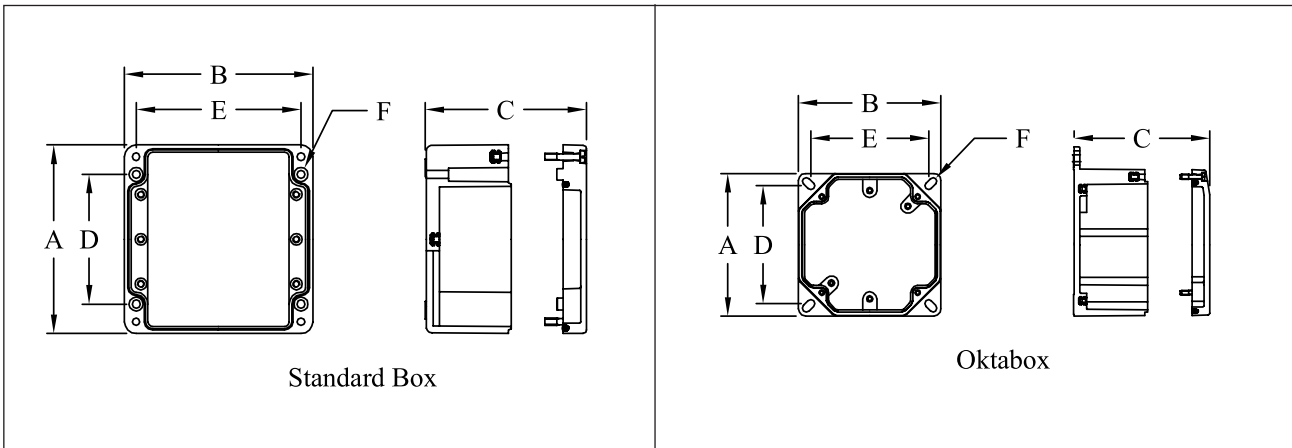
Oktabox cable entry and terminal arrangement



Oktabox external mounting foot

## Technical Data

Voltage/Current ratings	Dependant upon Ex components fitted and conductors used
Operating Temperature	T6 -20°C to +40°C, T5 -20°C to +55°C
Terminals	2.5 up to I20 – subject to enclosure limits
Flammability	Self Extinguishing, UL 94/V Use handle and cable gland for plug 4 fixing holes on plug to handle units
Material	Glass reinforced duroplastic polyester, graphite added Halogen Free
Colour/Finish	Black as moulded
Mounting	G41 – G47 Internal fixing holes G48 & G49 External fixing holes
Features	Silicone weather seal Heavy duty GRP mouldings Graphite loaded material to minimise static build up



Standard Box						
	A	B	C	D	E	F Ø
G41	120 x 120		90	82	106	6.3
G42	160 x 160		90	110	140	6.5
G43	250 x 250		120	200	235	6.5
G44	405 x 405		120	355	388	6.5
G45	160 x 260		90	110	240	6.5
G46	160 x 360		90	110	340	6.5
G47	250 x 400		120	200	380	6.5
Oktabox						
G48	120 x 120		76	100	100	5.5
G49	160 x 160		93	140	140	5.5