

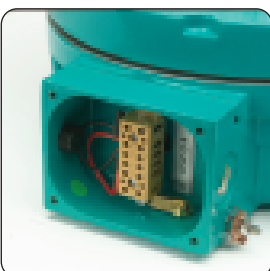
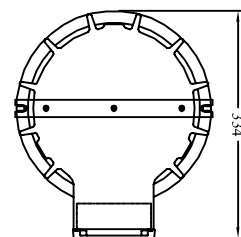
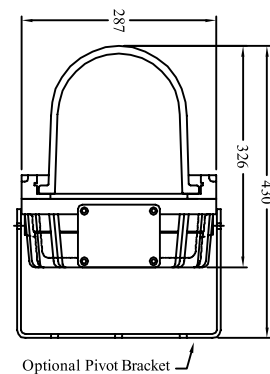
Certification and Approval

Certification Code	EEx de II 2 GD IIC T5
Certification number	SIRA 00 ATEX 1047
Certification standard	EN 60079-0, 1, 7
Protection	IP 66

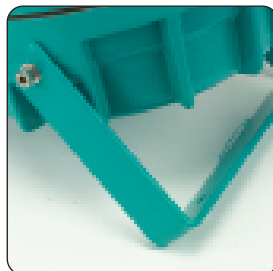
Features Options

Up to 100,000 hours life expectancy
 Optional internal and/or external Reflector
 Immediate ignition and re-ignition
 Fixed or directional mounting options
 Integral EEx e Terminal chamber

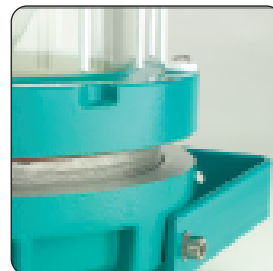
Sealed and flying lead fitted
 Optional internal /external Reflector
 Coloured glass option
 Fixed or directional mounting options



Terminal Block Access



Swivel Stirrup mounting



Threaded flame path

Technical Data

Supply Voltage	220-240v, 50/60Hz
Operating Temperature	-25°C to +40 °C
Control Gear	High frequency generator driving induction lamp within the luminaire
Lamp Options	55w or 85w induction lamp
Cable Entries	2 x M20 – ISO (1 plugged) as Standard Other threads available.
Terminals	4 (4mm) wire and earth with looping facility Cable crimping required at installation when looping
Mounting Facility	Back mounted fixing strap
Access	Terminals accessed via terminal cover retained by cap screws Lamp and gear accessed via removable glass dome
Material	Corrosion resistant marine grade aluminium body and bezel Toughened Borosilicate glass dome
Finish	2 Pack epoxy paint on primed surface. Standard colour - Aqua Additional costs for non standard colours
Accessories	Internal or external reflector Pivot bracket for directional control Pendant mount Wire Guard
Weight	15.0Kgs
Features	Ultra long life Flicker free start Low energy consumption Constant light independent of voltage fluctuations Automatic safety cut out in case of lamp failure