

Ambient Temperatures 'T' ratings

610 Beacon

Static Beacons: T4 @ Ta = 40°C GLS
 T4 @ Ta = 70°C SL/PLCE
 Xenon warning lights: T4 @ Ta = 55°C
 Rotating: T4 @ Ta = 70°C

610 Well Glass

Certified with elliptical lamps.
 Max. 150w GLS T4 @ Ta = 40°C
 50 or 70w SON-E T4 @ Ta = 40°C
 110w SON-E T4 @ Ta = 40°C
 70w SON-R T3 @ Ta = 55°C
 50w or 80w HPMV/MBF T4 @ Ta = 40°C
 125w HPMV/MBF T3 @ Ta = 35°C
 Max. 25w SL or 20w PLCE T4 @ Ta = 70°C
 All with ES (E27) lampholder.
 Up to 150w GLS BC also available T4 @ Ta = 40°C
 Lamps are not included.
 N.B. temp. classifications can be improved if mounted vertically.

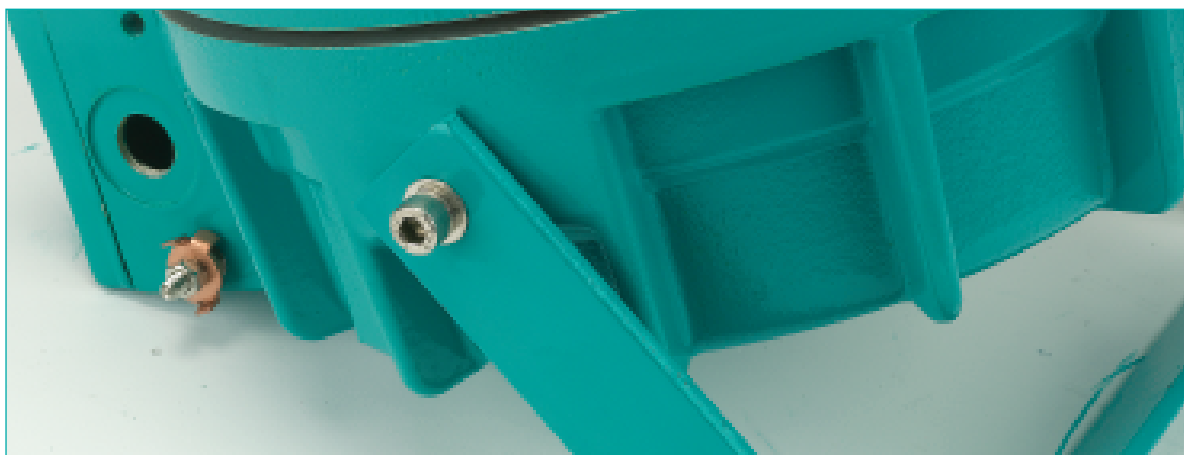
620 Well Glass

Certified with elliptical lamps
 Max. 200w GLS T3 @ Ta = 55°C.
 125w HPMV/MBF T4 @ Ta = 40°C or T3 @ Ta = 60°C
 Max. 25w SL or 20w PLCE T6 @ Ta = 40°C or T5 @ Ta = 60°C
 All with ES (E27) lampholder

300w GLS T3 @ Ta = 55°C
 150w SON T4 @ Ta = 40°C or T3 @ Ta = 60°C
 250w SON I T3 @ Ta = 40°C
 250w MBI T3 @ Ta = 40°C
 250w HMPV/MBF T3 @ Ta = 39°C

All with GES (E40) lampholder.
 Standard temperature classification applies to all methods of mounting.
 Up to 200w GLS BC also available.

Lamps are not included
 High temperature version (at extra cost).
 300w GLS T3 @ Ta = 85°C
 150w SON T3 @ Ta = 90°C
 250w SON-I T3 @ Ta = 70°C
 250w MBI T3 @ Ta = 70°C
 125w HPMV T3 @ Ta = 90°C
 250w HPMV T2 @ Ta = 65°C or T3 @ Ta = 50°C
 N.B. For Ta up to 60°C cable must be suitable for 116°C operation. Above Ta 60°C cable must be suitable for 146°C operation



621 Bulkhead

Certified with elliptical or tubular lamps.

Max. 200w GLS	T4 @ Ta = 34°C
50w or 70w SON	T4 @ Ta = 40°C
or	T3 @ Ta = 60°C
50w or 80w HPMV/MBF	T4 @ Ta = 40°C
or	T3 @ Ta = 60°C
125w HPMV/MBF	T4 @ Ta = 40°C
Max. 25w SL or 20w PLCE	T6 @ Ta = 70°C
or	T5 @ Ta = 60°C
All with ES (E27) lampholder.	
Up to 200w BC also available.	T4 @ Ta = 34°C
High temperature version (at extra cost).	
200w GLS	T3 @ Ta = 60°C
70w SON	T3 @ Ta = 90°C
80w HPMV/MBF	T3 @ Ta = 90°C
125w HPMV/MBF	T3 @ Ta = 70°C
25w SL or 20w PLCE	T5 @ Ta = 60°C
Lamps not included	
N.B. For Ta up to 60°C cable must be suitable for 116°C operation. Above Ta 60°C cable must be suitable for 146°C operation.	

7 series Fluorescent

Lamp source options:	Certification data:	All options certified for -25°C
	8w T5 @ Ta=40°C	T4 @ Ta=52°C EEx d IIC
	18w T6 @ Ta=40°C	T5 @ Ta=55°C EEx d IIC
	36w T6 @ Ta=40°C	T5 @ Ta=55°C EEx d IIB
	58w T6 @ Ta=40°C	T5 @ Ta=55°C EEx d IIB
	70w T5 @ Ta=40°C	T4 @ Ta=55°C EEx d IIB

Emergency Range

Lamp source options:	Certification data:	All options certified for -25°C
	8w T6 @ Ta=40°C	T6 @ Ta=52°C EEx d IIC
	18w T6 @ Ta=40°C	T5 @ Ta=55°C EEx d IIC
	36w T6 @ Ta=40°C	T5 @ Ta=55°C EEx d IIB
	58w T6 @ Ta=40°C	T5 @ Ta=55°C EEx d IIB

7 series Compact

Lamp source options:	Standard fluorescent	
Size 1	1 or 2 x 11w max PL-S	T4 @ Ta=52°C
	1 or 2 x 18w max PL-L	
	1 or 2 x 26w max PL-C	T5 @ Ta=40°C
Size 2	1 or 2 x 36w max PL-L	T6 @ Ta=40°C
	1 or 2 x 55w max PL-L (HF only)	T6 @ Ta=40°C
	Emergency fluorescent	
Size 1	1 x 18w max PL-L EM	T4 @ Ta=52°C
Size 2	1 x 2 x 36w max PL-L EM	T6 @ Ta=40°C

8 series Flood Light

Lamp source options:	
80w, 250w HPMV	T3 @ Ta = 55°C (D=T147°C)
With ES (E27) lampholder.	
150w, 250w SON	T3 @ Ta = 55°C (D=T147°C)
250w MBI	T3 @ Ta = 55°C (D=T147°C)
500w Tung Halogen	T3 @ Ta = 55°C (D=T175°C)
250w HPMV	T3 @ Ta = 55°C (D=T147°C)
400w SON/MBI	T3 @ Ta = 40°C (D=T147°C)
400w, HPMV	T3 @ Ta = 40°C (D=T147°C)
500w, Tung Halogen	T3 @ Ta = 55°C (D=T173°C)
150w, 250w SON	T3 @ Ta = 40°C (D=T127°C)

9 series Fluorescent

All options certified for -20°C to +55°C
All variations: T5 @ Ta 25°C
T4 @ Ta 55°C

9R series Fluorescent

All options certified for -20°C to +55°C
EEx ed IIC T5 @ Ta 25°C or T4 @ 55°C